

DOG BONES

Tylaska

MARINE HARDWARE

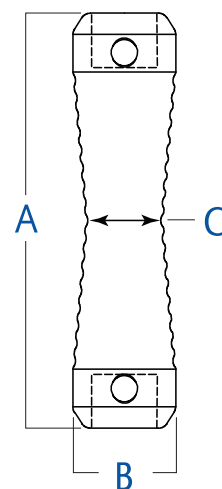
A dogbone is basically a short structural rod that can be attached to the end of a line and used like a button or toggle to make a connection to another line, grommet or deck fitting. The tapered middle and symmetric ends make the part look like a bone, hence the name "dogbone." The dogbone itself has been around since the days of the tall sailing ships and was originally made from a wooden peg. Over the years the device faded into obscurity but was recently revived due to better materials and a new appreciation of its versatility. The dogbone is a very convenient way for attaching the halyard line to the headboard as you can maximize sail height without the added length of a conventional shackle. It also works well for jib and spin-sheets, outhauls, the connection of soft loops used for attaching blocks to deck fittings, and numerous other rigging applications. Unlike a knot, the dogbone connection does not jam up under tension and can be quickly attached or detached. The dogbone lives again!



The Tylaska dogbones are available in seven different sizes, with each size available in either aluminum or 17-4PH stainless depending upon the strength requirements.

Dogbone	A in (mm)	B in (mm)	C in (mm)	Line Size (Recommended)	SWL lb (kg)	Breaking Strength lb (kg)
DB6	0.945 (24)	0.236 (6)	0.166 (4.2)	1/8", 3mm	650* (300*)	1300* (600*)
DB6 SS	0.945 (24)	0.236 (6)	0.166 (4.2)	1/8", 3mm	1,400 (650)	2,800 (1,300*)
DB8	1.256 (32)	0.311 (8)	0.222 (5.6)	5/32", 4mm	1,200* (550*)	2,400* (1,100*)
DB8 SS	1.256 (32)	0.311 (8)	0.222 (5.6)	5/32", 4mm	2,500* (1150*)	5,000* (2300*)
DB10	1.575 (40)	0.390 (10)	0.277 (7)	1/4", 6mm	2100 (950)	4200 (1,900)
DB10SS	1.575 (40)	0.390 (10)	0.277 (7)	1/4", 6mm	4,500* (2,050*)	9,000* (4,100*)
DB12	1.890 (48)	0.468 (12)	0.332 (8.4)	9/32", 7mm	3,100 (1,400)	6,200 (2,800)
DB12SS	1.890 (48)	0.468 (12)	0.332 (8.4)	9/32", 7mm	6,500 (2,950)	13,000 (5,900)
DB14	2.205 (56)	0.546 (14)	0.388 (9.9)	5/16", 8mm	4,200* (1,900*)	8,400* (3,800*)
DB 14SS	2.205 (56)	0.546 (14)	0.388 (9.9)	5/16", 8mm	9,000* (4,100*)	18,000* (8,200*)
DB16	2.520 (64)	0.625 (16)	0.443 (11.3)	3/8", 10mm	5,500* (2,500*)	11,400* (5,000*)
DB 16SS	2.520 (64)	0.624 (16)	0.443 (11.3)	3/8", 10mm	11,500* (5,200*)	23,000* (10,400*)
DB18	2.845 (72)	0.709 (18)	0.499 (12.7)	1/2", 12mm	7,000* (3,200*)	14,000* (6400*)
DB 18SS	2.845 (72)	0.709 (18)	0.499 (12.7)	1/2", 12mm	15,000* (6,800*)	30,000* (13,600*)

*Estimated Loads



DOGBONES

THE TYLASKA DOGBONE DESIGN*



The main feature of the Tylaska dogbone design is its unique patented tapered design with a grooved texture that grabs onto the line and prevents slippage.

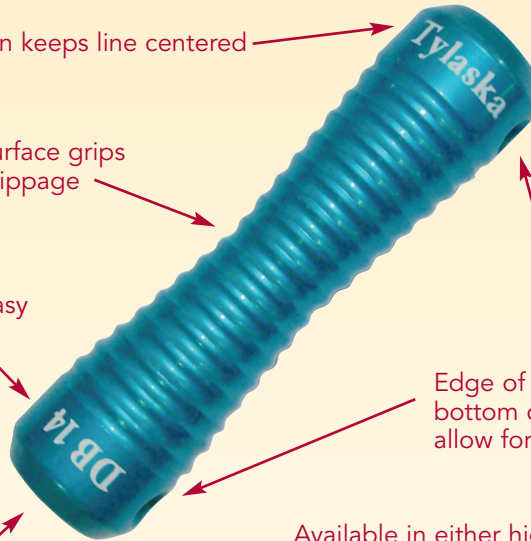
As the dogbone relies on friction to keep the connecting line from slipping off its ends, designs with straight shanks are not very secure and adding flanges to the shank creates snagging problems. Tapering the shank is better, but still does not grip the line. The new Tylaska design has both a taper and multiple surface humps that grip the line but do not cut or damage the fibers. This feature works extremely well and makes a big difference over competing designs.

Tapered design keeps line centered

Unique grooved surface grips line and reduces slippage

Laser engraved for easy size identification

Recessed holes on ends keep leash knots captive and help reduce weight



Cross holes on both ends allow for attachment of leash or for lashing to both sides

Edge of cross hole is flush with bottom of recessed end hole to allow for easier insertion of leash

Available in either high strength 7000 series aluminum or heat treated 17-4PH stainless for extreme strength.

Aluminum versions are anodized and stainless versions are electropolished to improve corrosion resistance.

Extra long leash included with each dogbone

Available in seven different sizes from 6mm to 18mm



Dogbone as Halyard



Dogbone used to terminate a sheet



Dogbone on loop to connect block

Tylaska
MARINE HARDWARE

*Patent Pending