

# STAINLESS STEEL THREADED FORK

## Threaded Terminals - Fork Studs RH & LH

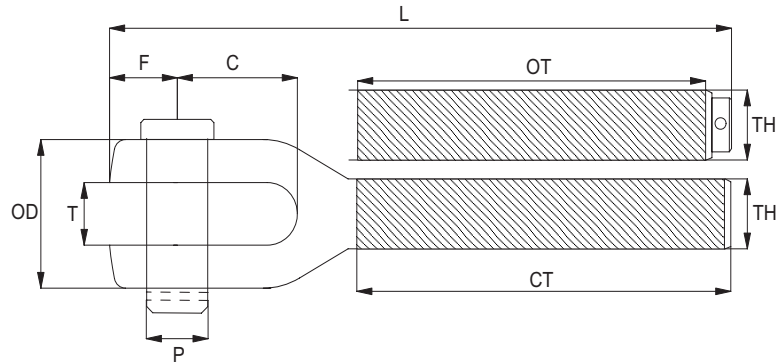
### Benefits

Electrical upsetting with beneficial grain structure and low stress levels to reduce fatigue.

All threads are precision forged or cut to BS3643 part 1 and 2 and BS1580 part 1 and 2.

Free from structural welds which may reduce the strength and integrity of the product.

All forks are manufactured from solid bar - no welding involved.



Threaded Terminals - Fork Studs RH & LH

Product Code	Thread	P	L	F	C	T	OD	CT	OT	Weight
FS#03	1/4" unf	6.0mm	76mm	7mm	12.5mm	6.2mm	14.3mm	47mm	42mm	25g
FS#04	5/16" unf	8mm	91mm	9mm	17mm	7.9mm	18.0mm	54mm	49mm	55g
FS#05	3/8" unf	9.5mm	111mm	11mm	19mm	10mm	22.2mm	68mm	63mm	85g
FS#06	7/16" unf	11.3mm	122mm	12mm	22mm	11mm	25.4mm	75mm	68mm	120g
FS#07	1/2" unf	12.7mm	144mm	15mm	25mm	12.7mm	28.6mm	90mm	83mm	185g
FS#08	5/8" unf	14.3mm	162mm	17mm	28mm	14mm	34.9mm	100mm	93mm	335g
FS#10	5/8" unf	16mm	175mm	18mm	32mm	16mm	38.1mm	100mm	93mm	400g
FS#12	3/4" unf	19mm	207mm	23mm	38mm	19mm	47.6mm	120mm	111mm	750g
FS#14	7/8" unf	22.3mm	236mm	26mm	45mm	22.2mm	54.0mm	140mm	130mm	1075g
FS#16	1" unf	25.4mm	271mm	31mm	50mm	25.4mm	63.5mm	160mm	150mm	1690g
FS#19	1 1/8" unf	28.6mm	303mm	33mm	58mm	28.6mm	69.9mm	180mm	163mm	2350g
FS#22	1 1/4" unf	32mm	338mm	39mm	64mm	32mm	76.2mm	200mm	188mm	3200g
FS#26	1 3/8" unf	35mm	372mm	44mm	70mm	35mm	82.5mm	220mm	208mm	4000g

Replace # with C for Closed Style (CT) or O for Open Style (OT)

All Hi-MOD products are produced to a high degree of quality control, using modern lean manufacturing processes, resulting in a reliable and consistent product