

# SWAGELESS COMPRESSION TERMINAL

## Toggle End

### Benefits

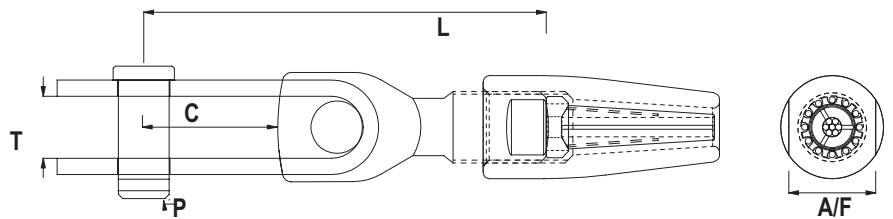
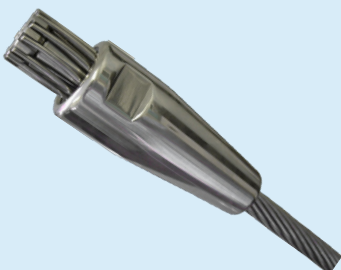
The Unique star shaped Crown Ring positions and holds the wire strands in place, eliminating the requirement for awkward wire end bending. The shallow angled cone establishes direct mechanical grip on the core and all other outer strands. Stainless steel grade EN10088 1.4404 (316) is used on all parts with the exception of the crown ring which is manufactured from Aluminium Bronze. No sealant or packing is required.

### Wire Construction

The part codes in the table are for 1 x 19 wire rope construction. Different Cones and Crown Rings are used for 7 strand, compact strand and Dyform®.

Add suffix -7 for 7 Strand wires.

Please refer to your re-seller for the relevant coding for Compact Strand or Dyform®.



Swageless Compression Terminals - Toggles							
Product Code	W	P	C	T	L	A/F B	Weight
CTT03	3mm	6.35mm	14mm	8mm	45mm	9.5mm	37g
CTT04	4mm	8.0mm	18mm	9mm	53mm	11mm	71g
CTT05	5mm	9.5mm	21mm	11mm	64mm	14mm	125g
CTT06	6mm	11mm	25mm	13mm	78mm	19mm	258g
CTT07	7mm	12mm	27mm	15mm	89mm	20mm	327g
CTT08DS	8mm	12mm	27mm	15mm	92mm	22mm	397g
CTT08US	8mm	16mm	36mm	19mm	116mm	22mm	700g
CTT10	10mm	16mm	36mm	19mm	116mm	26mm	800g
CTT12	12mm	19mm	45mm	22mm	157mm	32mm	1242g
CTT14	14mm	22mm	53mm	25mm	174mm	36mm	2302g
CTT16	16mm	25.4mm	62mm	28mm	194mm	40mm	3037g
CTT19	19mm	28mm	63mm	32mm	215mm	44mm	4280g
CTT22	22mm	32mm	76mm	35mm	235mm	52mm	6518g
CTT26	26mm	35mm	92mm	38mm	296mm	64mm	9591g

Also available with Fork, Eye, and Threaded Stud End

#### Wire Construction

The part codes in the table are for 1 x 19 wire rope construction. Different Cones and Crown Rings are used for 7 strand, compact strand and Dyform®. Add suffix -7 for 7 Strand wires. Please refer to your re-seller for the relevant coding for Compact Strand or Dyform®.